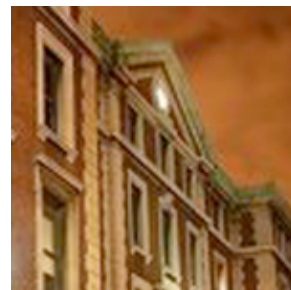


Fall 2008 Schedule for The Columbia Art History Grad Colloquium

The Columbia Art History Grad Colloquium is a series designed to bring together department faculty and graduate students from all fields. This is the chance to try out new ideas, introduce current scholarship, refine a paper, present an idea for a new course, prepare for a fellowship interview, see if you prefer Keynote to PowerPoint, etc. The goal is to have one presenter every Thursday who will have the opportunity to speak in front of a supportive audience.

If you know that you would like to present (15-30min max), please let me know. If you have any suggestions for presentation topics, comments or questions, please do not hesitate to contact at columbiacolloquium@gmail.com.



Elizabeth Hutchinson

New Thoughts on a Bierstadt Oil Sketch

Thursday, September 18, 2008 | 6:00PM

Location: 832 Schermerhorn Hall

Sarah Schaefer

Between Lived and Unlived: Exhibiting Art Nouveau Interiors

Thursday, September 25, 2008 | 6:00PM

Location: 832 Schermerhorn Hall

Chun Yi Tsai

TBA

Thursday, October 2, 2008 | 6:00PM

Location: 832 Schermerhorn Hall

Ellen Hoobler

Trouble in Tombs: Alfonso Caso's Excavations at Monte Alban, Oaxaca, Mexico in the 1930s

Thursday, October 9, 2008 | 6:00PM

Location: 832 Schermerhorn Hall

Lynn Catterson

Donatello's Road Trip to Cortona: a Case Study in Renaissance Sarcophagi

Thursday, October 16, 2008 | 6:00PM

Location: 832 Schermerhorn Hall

Natalie Kampen

Livia's Big Hands: A Problem in the Iconography of Imperial Power

Thursday, October 23, 2008 | 6:00PM

Location: 832 Schermerhorn Hall

Jordan Bear

Index Marks the Spot? On Histories of Photographic Referentiality

Thursday, October 30, 2008 | 6:00PM

Location: 832 Schermerhorn Hall

Sarah Cartwright

TBA

Thursday, November 6, 2008 | 6:00PM

Location: 832 Schermerhorn Hall

Phoebe Prioleau

Edouard Manet's The Laundry: the Source of a Poetic Revelation?

Thursday, November 13, 2008 | 6:00PM

Location: 832 Schermerhorn Hall

Jonathan Crary

TBA

Thursday, November 20, 2008 | 6:00PM

Location: 832 Schermerhorn Hall